

Contact



KettenWulf Betriebs GmbH
Zum Hohenstein 15
D-59889 Eslohe-Kückelheim
Germany
T +49.(0)2973.801-0
F +49.(0)2973.801-238
service@kettenwulf.com
www.kettenwulf.com

KettenWulf GmbH
Export Division
Industriestraße 41
D-28876 Oyten
Germany
T +49.(0)4207.608-0
F +49.(0)4207.608-149
export@kettenwulf.com
www.kettenwulf.com

KettenWulf GmbH
Division Ferlacher Förderketten
A-9163 Unterbergen 25
Austria
T +43.(0)4227.25 27
F +43.(0)4227.35 94
office@kettenwulf.com
www.kettenwulf.com

KettenWulf NV
Division Dyna Chains
Industriepark-Zwijnaarde 1
B-9052 Gent
Belgium
T +32.(0)9.243 73 73
F +32.(0)9.221 56 03
service@ketten-wulf.be
www.ketten-wulf.be

Hangzhou Wulf Chain Co. Ltd.
40 Tangning Road
Yunhe Town
Yuhang District
311102 Hangzhou
China
T +86.(0)571.891 709 18
F +86.(0)571.891 709 85
china@kettenwulf.com
www.kettenwulf.com

Wulf Chain USA, LP
The Woodlands at Riverside
8110 Troon Circle SW, Suite 170
Austell, GA 30168
USA
T +1.678.433 02 10
F +1.678.433 02 15
usa@kettenwulf.com
www.kettenwulf.com

KettenWulf s.r.o.
Jana Oplatála 1279
69059 Břeclav
Czech Republic
T +42.(0)519.30 27 04
F +42.(0)519.82 75 86
czech@kettenwulf.com
www.kettenwulf.com

KettenWulf
Representative Office Poland
Przedstawiciel handlowy
mgr Elżbieta Włodarczak-Leks
ul. Ogrodowa 34 B/4
PL-65-001 Zielona Góra
Poland
T +48.(0)683.25 43 37
F +48.(0)683.25 43 37
poland@kettenwulf.com
www.kettenwulf.com

KettenWulf
Representative Office Japan
Minoh 4-Chome, 14-13 Minoh-shi
Osaka 562-0001
Japan
T +81.72.796 24 24
F +81.72.796 24 24
japan@kettenwulf.com
www.kettenwulf.com

Special Chains and Sprockets for the Wood Industry



Applications and Products

The KettenWulf Group



Kueckelheim, Germany: head office of the international KettenWulf Group



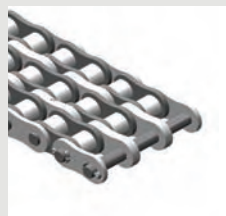
KettenWulf worldwide: 6 production sites and 12 distribution locations supply to almost all industries worldwide

Past and Present

KettenWulf was founded in Kueckelheim, Germany in 1925. In result of the powerful expansion of the company in the second half of the 20th century, the initially small-sized chain and sprocket manufacturer developed into a successful global enterprise.

Expansion worldwide: Today the KettenWulf Group with 6 production sites in Europe and Asia is one of the largest and leading European manufacturers of conveyor chains, roller chains and sprockets. More than 800 employees design, produce and market individual solutions in the sector of conveyor technique and drive engineering worldwide:

- » **Germany**
- » **Belgium**
- » **France**
- » **Austria**
- » **Czech Republic**
- » **Poland**
- » **USA**
- » **Japan**
- » **China**



KettenWulf develops and produces individual solutions on customer's demand in the product range of conveyor chains, roller chains and sprockets. We market our products in multiple designs, sizes and applications to various industries, for example:

- » **Wood Industry**
- » **Paper Industry**
- » **Escalator Industry**
- » **Bulk Material Handling Industry**
- » **Automotive Industry**
- » **Steel Industry**
- » **Floodgate Industry**
- » **Food Industry**
- » **Packaging Industry**

Specialists for the Wood Industry

We are solution providers for the Wood Processing Industry

Therefore KettenWulf commits the know-how and production experience of more than 80 years to the development of innovative and prospective technologies. The output of this commitment is a broad spectrum of technically well-engineered products for our wood processing customers.



Committed employees, a customer-oriented administration and quality-oriented production processes, ensure the high standard of the KettenWulf products and services.

Our engineers and product designers determine the requirements for optimised chains and sprockets according to your applications and needs. Your individual requirements, which are kept confidential, are the basis for our design work and the realization of your customised chains and sprockets.

Efficient Wood Processing

From solid wood processing to furniture manufacturing: For efficient wood processing the performance of the conveyor chains, roller chains and sprockets is utmost important. Our product demands are the highest and often as different as the production steps of the Wood Industry. KettenWulf is one of the leading OEM-suppliers and is prepared to fulfil your individual requirements dependably. The KettenWulf product programme for the Wood Industry is a result of the long experience as a leading supplier. Our conveyor chains, roller chains and sprockets are the product of a close collaboration with well-known OEMs and wood-processing companies.



KettenWulf Conveyor Chains, Roller Chains and Sprockets fulfil the highest requirements for an efficient wood processing

High-tech for the Wood Industry

Due to a constant enhancement in product design the production of the KettenWulf Group is constantly modernised. High automation processing and modern production processes are important, such as robotic welding and laser cutting.



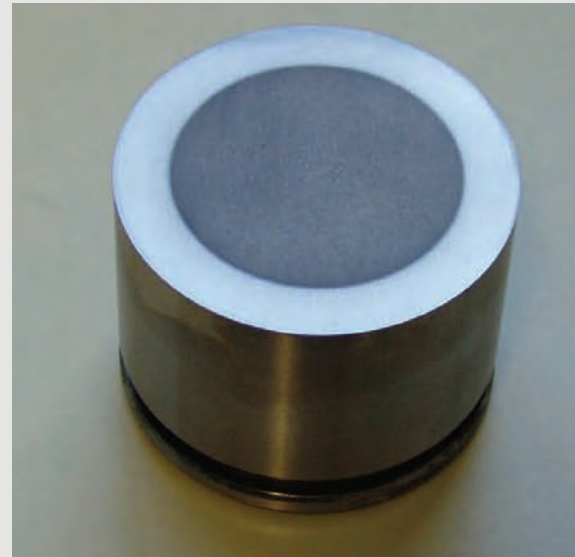
Chain Technology at the highest Level

Highest quality in every aspect

Our chain pins are made of alloyed case-hardened steels and induction hardened heat-treated steels.

The benefits of our production technologies are high surface hardness and ductile core structure. This ensures following component properties:

- » very hard and wear-resisting surfaces
- » high toughness of components
- » highest wear resistance in the chain joints
- » high life-time expectancy



KettenWulf-Quality:
Chain Bushing made of case-hardened steel with high case hardening depth with inner and outer wear surface:

- » high wear resistance in the chain joints
- » low chain elongation and therefore high life expectancy



Standard-Quality:
Heat treatable steel, induction hardened on the outside, inner bore without hardening:

- » soft surface of the chain bushing bore
- » high wear in the chain joints (material removal within the chain bushing)
- » very low life expectancy



KettenWulf Round Riveting in cross-section

KettenWulf Round Riveting

Another feature of our high-quality chains for the Wood Industry

- » round riveting on specialised riveting machines
- » high material deformation degree
- » optimised form-fitting
- » further increased press-fit between pins and outer link plates
- » high protection of the outer link plates against lateral strain and impacts
- » highest operational safety



High-quality special chains with Round Riveting

KettenWulf special chains and sprockets for the Wood Industry

plank transportation



plank transportation



plank transportation



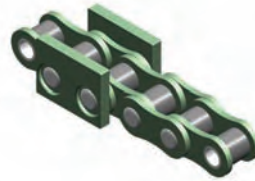
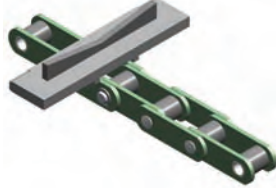
wood chip conveyor



wood chip conveyor



block carriage/log transport



chip board transportation



trunk intake



transport of sensitive goods



palletisation



drive



accumulation-chain



flyer chain



sprockets



sprockets



KettenWulf products for all applications in the Wood Processing Industry

log wood feeder

root-reducer

debarking

1



2



3



woodchip conveyor



• **sorting strand/
block carriage**

4



• **separating / saw**

- » take-up conveyor
- » cant dog
- » trunk intake
- » saw / plank transportation

5



• **plank separation**

6



woodchip conveyor



plank storage

7



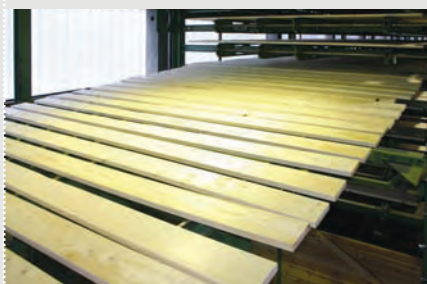
palletisation

8



woodchip conveyor/
scraper conveyor

9



woodchip conveyor



For efficient wood processing the performance of the conveyor chains, roller chains and sprockets is utmost important. Our product demands are the highest and often as different as the production steps of the Wood Industry.



Subsequent Processing in the Wood Industry

Transport of sensitive goods



Transport of sensitive goods/
Sortation



Accumulation-chain



Chip board transportation



Shear pin sprocket



As one of the leading suppliers for the OEMs in the wood-processing sector, KettenWulf offers a big assortment of chains for your conveying application. With our know-how and our long experience, we are able to engineer customised solutions for your application. If you have a special conveying task or if you want to extend the lifetime and availability of your plant, use the experience of our experts. In cooperation with you we develop the optimal technical and economical solution. Also take advantage of our on-site consultant and support.

Another positive aspect is the ex-stock availability of our products, leading to short down-times and high availability of your operational equipment.

The KettenWulf products have the following features:

- » **operational safety = high equipment availability**
- » **gentle transportation of sensitive goods**
- » **low-maintenance execution**
- » **high precision for all clocked circuit operations**
- » **highest fatigue strength for extreme requirements, e.g. drives with extreme tensile and impact load**
- » **highest wear resistance, even for applications with a very abrasive environment**

Our products can also be utilised in all industries related to the Wood Industry

- » **Chip Board Industry**
- » **Furniture Industry**
- » **Laminated Wood Sector**
- » **Planning and Milling Sector**
- » **Wood-Fluting Machines**
- » **Paper and Paper Pulp Industry**

Service at KettenWulf



The KettenWulf Quality Management is certified according to DIN EN ISO 9001:2000.

We realise your ideas

Whether you provide a drawing, a sample or just an idea – our experienced engineers design together with you the best possible solution for your applications in the conveyor chains and roller chains sector. Since 1986 we utilise computer aided design for the conception of your engineered chains.



Design and execution of your conveyer applications by use of Solid-Edge 3D.



High frequency testing machines verify the fatigue resistance of the steel qualities used.

Quality Management

Our Quality Management is based on the principles of DIN EN ISO 9001:2000. Therefore we secure the high quality standard required by our clients. The required raw materials are subject to a carefully done receiving inspection. All components and finished products are subjected to a permanent quality check.

Wear development, fatigue strength and breaking load are analysed by us with modern technical equipment such as a roller test bench, a high frequency testing machine and a calibrated breaking load test machine with a chain pull force up to 3,000 KN.



Material test: On the breaking load test machine chain pull forces of up to 3.000 KN can be applied to the chain.



Chains with limited length tolerances are measured on a length measuring machine.